



Park Crest Condominiums – Tyson's Corner, VA

For the West Group. This project is a residential complex comprised of four nineteen story buildings, one five story building, and a health / fitness center building. The entire complex comprises approximately 1,350 residential units. Currently in permit review.

Architect – WDG Architecture



912 F Street, NW – Washington, DC

For Douglas Development Corporation. Washington Business Congress award-winning 140,000 sq.ft. luxury loft condominium building. The 12-story project of 70 units also incorporated the restoration of three historic townhouses and the addition of three new below grade levels of residential parking.

Architect - Shalom Baranes Associates

Langston Lofts Condominiums – Washington, DC

For Metropolis Development Corporation. A new 80-unit residential building with retail space at the ground level and below grade parking levels. Anchored at the corner of Fourteenth and V Streets, this residential project is a significant element in the revitalization of a diverse neighborhood which was once the center of Washington's jazz and art scene.

Architect - Shalom Baranes Associates



Jefferson at Thomas Circle – Washington, DC

Located on the corner of 13th and M Street, this project is a magnificent high rise in the quiet neighborhood of Logan Circle. Ideally situated near Dupont Circle and the Penn Quarter neighborhoods, the building features 292 rental units, fitness center, pub/lounge, roof deck with pool, interior courtyard with landscaping and fountain, double height entrance lobby, and underground garage with 241 spaces.

Architect – Torti Gallas Partners



Senate Square Towers – Washington, DC

For Broadway Management. The project consists of two twelve-story residential towers totaling approximately 600,000 sq.ft. in 430 leading-edge luxury condominium units with amenity spaces. The project is currently under construction.

Architect – Esocoff & Associates

Landmark Lofts at Senate Square – Washington, DC

The project involves the conversion of 84,000 square feet of the historic Capital Children’s Museum building into 50 high-end residential condominiums. **Architect** – ABDO Development



Columbia Village – Arlington, VA

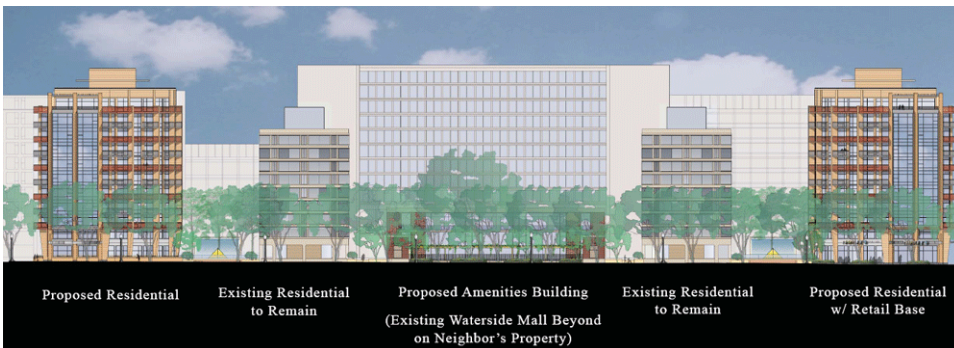
For Trammell Crow Residential. This project features a new 10-story, “U” shaped building combining retail and residential units built close to the street. A mixed-use project, Columbia Village fulfills the vision of the “Main Street” concept, creating a modern, pedestrian-oriented development for convenient living.

Architect – WDG Architecture

Park Place – Annapolis, MD

For the Jerome J. Parks Companies. The residence buildings are two of five buildings in a mixed-use project and contain 208 dwelling units in a seven story structure. The project is recently completed.

Architect – Davis Carter Scott, Ltd.



Marina View – Washington, DC

For Fairfield Residential. This project includes renovation of two existing residential towers, as well as the addition of two new high-rise towers and a separate amenities building. The buildings will share underground parking.

Architect – Esocoff & Associates



The DuMont – Washington, DC

For Broadway Management. This project includes two 14-story mixed-use buildings consisting of 558 residential units and first floor retail space, and totaling more than 600,000 sq.ft. The buildings will share a four level below-grade parking area, and the high-end condominiums will feature 9-foot ceilings with 2-story windows and private balconies. The buildings will also possess grand entrances, a fitness center, an E-Lounge, and rooftop swimming pool.

Architect – Esocoff & Associates

Arthur Capper Senior Living – Washington, DC

For Mid-City Urban, LLC. To create a revitalized, mixed-income/mixed-age/mixed-use neighborhood that will be an extension of the Capitol Hill neighborhood towards the Anacostia waterfront, the Arthur Capper development places higher density office and senior housing uses along the commercially-oriented M Street and along the newly created Canal Park. This first building finished construction in December, 2006.

Architect – Torti Gallas Partners



Lofts of Columbia Heights – Washington, DC

This seven-story, 96,000SF mixed-use project includes 56 one-, two- and three-bedroom condominium units and 20,000 sq. ft. of retail. Open floorplans in loft units, with all the upscale amenities demanded by today's urban residents, including gated parking, business center, and fitness space.

Architect – Morris Architects

Columbia Heights Triangle – Washington, DC

Part of the revitalization of the 14th Street corridor, this 117 unit building features lofts, club & fitness rooms, 2 level underground parking, roof-top deck and street level retail. Modern aesthetic incorporating metal and masonry façade, with floor to ceiling windows in most units. Total of 194,000sf.

Architect – Torti Gallas Partners

